

Power is the foundation® for all that we do.

It's the foundation for how we entertain ourselves, make ourselves comfortable, and even how we interact with each other. The products integrators install are requiring more and more microprocessors, and ultimately, their performance relies on power quality. Couple that with an aging infrastructure and it becomes clear why we experience many power related issues. It's a problem RoseWater Energy solves.

The RoseWater Energy Hub™ is a complete luxury energy management solution to clean energy, power conditioning, surge protection, solar battery storage, home battery backup with remote monitoring and redundant industrial-grade systems.

- **24/7 power conditioning** with an unwavering 120-volt 60 Hz output protects and enhances the performance of all home and office electronics, eliminating most if not all, service calls.
- **Uninterruptable Power Supply with zero transfer time**, and large-scale battery backup (minimum of 28.8 KWh) will allow residents to ride out power anomalies and outages safely and securely.
- **Industrial grade surge protection** to mitigate the damage caused by grid anomalies and naturally occurring weather events like lightning strikes.

Having everything preassembled, configured, prewired, and tested before installation ensures everything is ready for commissioning by our nation-wide installation team at the jobsite. Our support towers above our competitors.



ROSEWATERENERGY.COM | 954.467.8050

ROSEWATER ENERGY MANAGEMENT HUBS

The RoseWater Energy Hubs offer a complete system management solution, at the panel level, in one preassembled, configured, and integrated platform.

FEATURES:

- Constant power conditioning
- Zero transfer time UPS including power outages and load shifting
- 24/7 OPERATION REGARDLESS OF POWER SOURCE



ROSEWATER HUB20

20 KW CONTINUOUS POWER OUTPUT



ROSEWATER HUB40

40 KW CONTINUOUS POWER OUTPUT



HOW DO THE HUBS STACK UP TO THE COMPETITION?

The design prowess, engineering expertise and manufacturing capability sets the RoseWater Hubs apart from the competition.

Let's break down the details:

- **24/7 POWER CONDITIONING**
- **LOWEST TOTAL HARMONIC DISTORTION**
All the critical electronics connected through the Hub work better, are more reliable and will last longer.
- **COMMERCIAL, TELECOM AND MILITARY GRADE LIGHTNING PROTECTION**
RoseWater utilizes the same type of lightning protection used to protect mission critical devices.
- **HIGHEST EFFICIENCY**
Very little loss of power through the device.
- **LONGEST BATTERY RUN TIME**
Unlike our competition, our run times are calculated in terms of hours, not minutes.
- **INDUSTRY LEADING THREE-YEAR WARRANTY**
- **MINIMUM OF 20 KILOWATTS OF OUTPUT**
This is typically enough power to cover all AV, lighting, security, Internet infrastructure and control in many homes.
- **INCLUDES PRE-SALE ENGINEERING AND CONTRACTOR INTERFACE**
- **REMOTE MONITORING**
Full-time remote monitoring included
- **SUSTAINABLE PRODUCT**
The ability to integrate solar and use the internal automation to reduce carbon footprint. And, the lead-acid batteries used in the Hub are 96% recyclable.



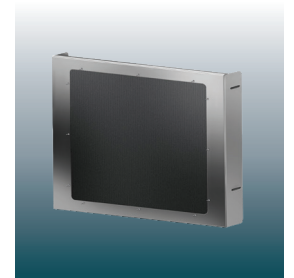
ROSEWATER ENERGY ACCESSORIES



SBX10 SOLAR BOX
solar panel integration



**FILTER40 (FOR HUB40) AND
FILTER 20 (FOR HUB20)
HARMONIC DISTORTION FILTERS**
isolate panel noise and eliminate cross channel feedback



**INVERTOR DUST
COVERS**
protects against dust and
debris



DIMENSIONS

HUB20

84" H x 28.1" W x 26.25" D
2,400 lbs

HUB40 (2 CABINETS - UPS AND BATTERY)

52" H x 28.1" W x 26.25" D
UPS Cabinet 550 lbs Battery Cabinet 1,700 lbs

SYSTEM OUTPUT POWER (UPS)

AC Voltage	120/240V 3 Wire + Ground	120/240V 3 Wire + Ground
AC Current	100/200	100/200
Frequency	60Hz, Same as input frequency	60Hz, Same as input frequency
Power	Hub20 20kVA/20kW Continuous	Hub40 40kVA/40kW Continuous

UPS INVERTERS

Inverter Quantity	8	16
Inverter Arrangement	Hub20 Two shelves, one shelf per phase	Hub40 Four shelves, 2 shelves per phase
Input Voltage (VAC)	120V (range 60V to 140V adjustable)	120V (range 60V to 140V adjustable)
Output Voltage (VAC)	120V	120V
Battery Voltage (VDC)	48 nominal (range 40V - 60V adjustable)	48 nominal (range 40V - 60V adjustable)
Transfer Time	Zero Transfer Time	Zero Transfer Time
Safety Standards, NRTL Recognition	CSA C22.2 107.3-05, UL1778; Issue 2 (shelves and modules)	CSA C22.2 107.3-05, UL1778; Issue 4 (shelves and modules)
EMC	FCC CFR47 Part 15 Class A; ICES-003	FCC CFR47 Part 15 Class A; ICES-003

BATTERIES

Type	VRLA	VRLA
Battery Voltage (VDC)	12V	12V
Battery Bus Voltage (VDC)	48V	48V
Energy Storage	28.8 kWh included; additional battery packs are available	28.8 kWh included; additional battery packs are available

ENCLOSURE

Mounting	Ground Mount, Concrete, Anchored	Ground Mount, Concrete, Anchored
Corrosion Resistance	Powder Coated	Powder Coated
System Level Cooling	Passive (dedicated forced air convection at individual component level)	Passive (dedicated forced air convection at individual component level)
Environment	Indoor	Indoor
Pollution Degree	IEC Pollution Degree 2	IEC Pollution Degree 2
Filters	None	None
Storage Temperature (C)	-4 to 130° F	-4 to 130° F
Operation Temperature (C)	-4 to 104° F	-4 to 104° F
Humidity (%)	0 to 93% non-condensing	0 to 93% non-condensing

ACCESSORIES

DIMENSIONS

WEIGHT

Extended Battery Pack (EBP) for Hub20	84" H x 28.1" W x 22.1" D	2,000 lbs
Extended Battery Pack (EBP) for Hub40	52" H x 28.1" W x 22.1" D	1,700 lbs
Solar Box (SBX10)	30.5" H x 24" W x 9.75" D	73 lbs

