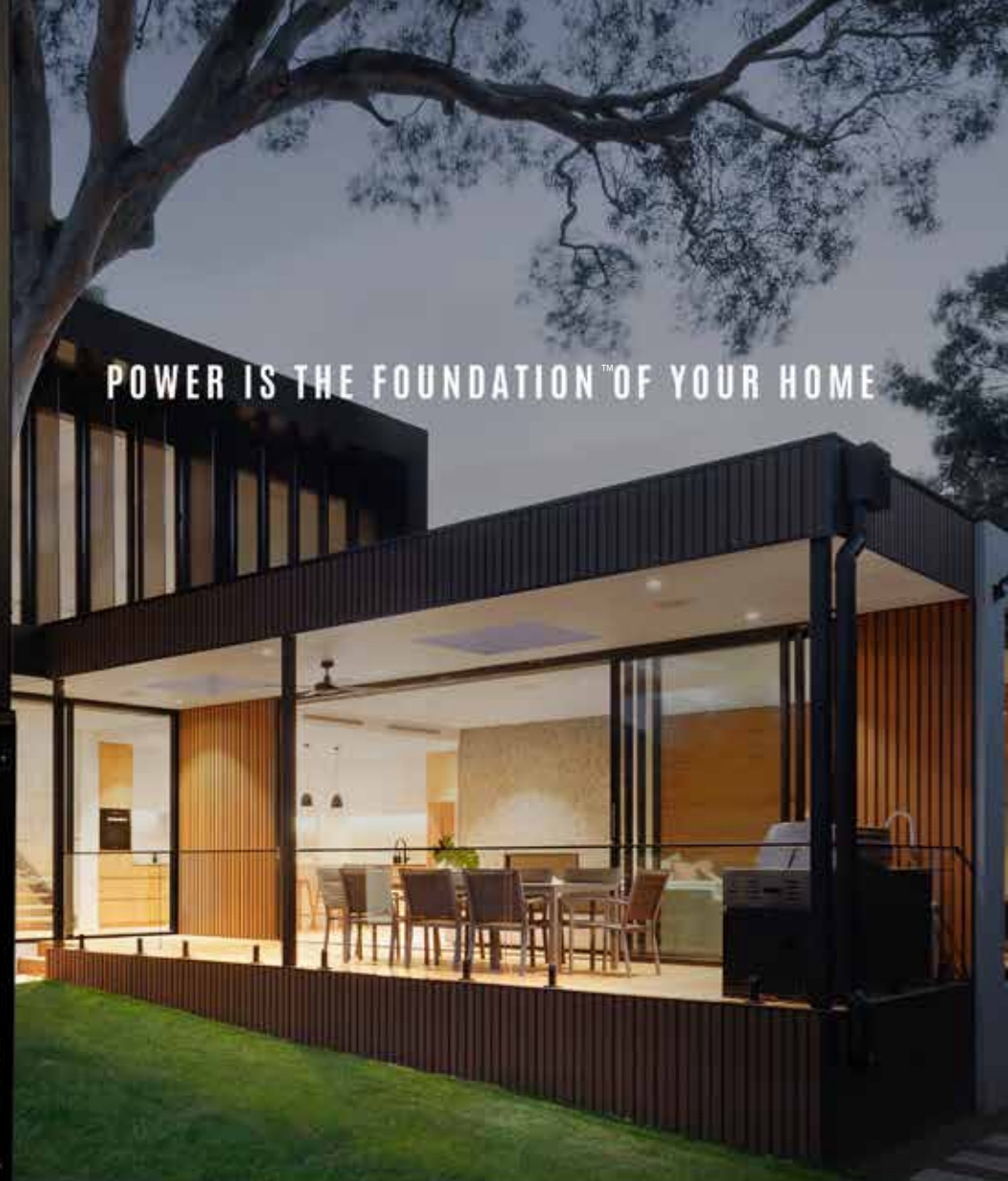




POWER IS THE FOUNDATION™ OF YOUR HOME



CLIENT TESTIMONIAL - THE HUB DIFFERENCE

“A recent system we installed has half a million dollars in technology integration. With all that tech installed, we have only had to go out to their home because they wanted to add more fun stuff. Not a single service call in over six months – and that’s just not heard of if we are all being honest.”
We can see the anomaly events while monitoring the Hub and it’s doing exactly what it should.”

LAMAR GIBSON, PRESIDENT, MESTRO HOME INTEGRATION, MEMPHIS, TN

Power is the foundation™ for all that we do.

It's the foundation for how we entertain ourselves, make ourselves comfortable, and even how we interact with each other. The products integrators install are requiring more and more microprocessors, and ultimately, their performance relies on power quality. Couple that with an aging infrastructure and it becomes clear why we experience many power related issues. It's a problem RoseWater Energy solves.

The RoseWater Energy Hub™ is a complete luxury energy management solution to clean energy, power conditioning, surge protection, solar battery storage, home battery backup with remote monitoring and redundant industrial-grade systems.

- **24/7 power conditioning** with an unwavering 120-volt 60 Hz output protects and enhances the performance of all home and office electronics, eliminating most if not all, service calls.
- **Uninterruptable Power Supply with zero transfer time**, with a large amount of battery backup will allow your clients to ride out power failures/issues safely and securely.
- **Industrial grade surge protection** to mitigate the damage caused by grid anomalies and naturally occurring weather events like lightning strikes.

Having everything preassembled, configured, prewired, and tested before installation ensures everything is ready for commissioning by our nation-wide installation team at the jobsite. Our support towers above our competitors.



HUB ACCESSORIES

ROSEWATER SB20 HUB

The RoseWater Energy Hub offers a complete system management solution, at the panel level, in one preassembled, configured, and integrated platform.



SOLAR BOX 10 (SB10 OR SBX10)

The SB10 Solar Box allows the Hub to accept solar power inputs.

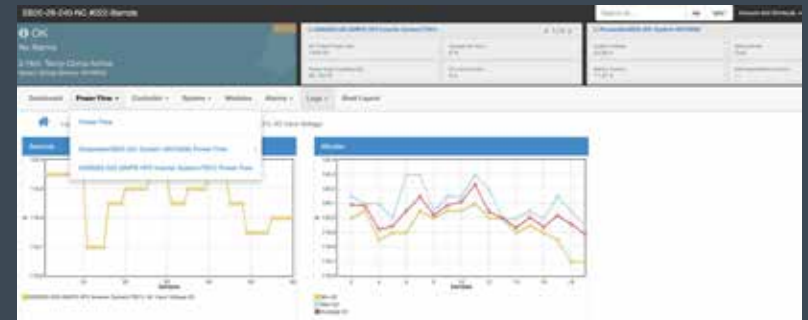


EXTENDED BATTERY PACK (EBP)

The Hub has the option for up to two Extended Battery Packages (EBP). Depending on the required battery load of the site, this can extend power for several more hours, days, or potentially indefinitely with a generator and solar options.

REAL-TIME ANALYTICS

Get notified in real time about power events. In many instances, you can have inconsistent power from the grid for weeks which can cause long term damage to sensitive electric components.





HOW DOES THE HUB SB20 STACK UP TO THE COMPETITION?

The design prowess, engineering expertise and manufacturing capability sets the RoseWater SB20 apart from the competition.

Let's break down the details:

24/7 POWER CONDITIONING

LOWEST TOTAL HARMONIC DISTORTION

All the critical electronics connected through the Hub work better, are more reliable and will last longer.

COMMERCIAL, TELECOM AND MILITARY GRADE LIGHTNING PROTECTION

RoseWater utilizes the same type of lightning protection used to protect mission critical devices.

HIGHEST EFFICIENCY

Very little loss of power through the device.

LONGEST BATTERY RUN TIME

Unlike our competition, our run times are calculated in terms of hours, not minutes.

INDUSTRY LEADING THREE-YEAR WARRANTY

20 KILOWATTS OF OUTPUT

This is typically enough power to cover all AV, lighting, security, Internet infrastructure and control in many homes.

INCLUDES PRE-SALE ENGINEERING AND CONTRACTOR INTERFACE

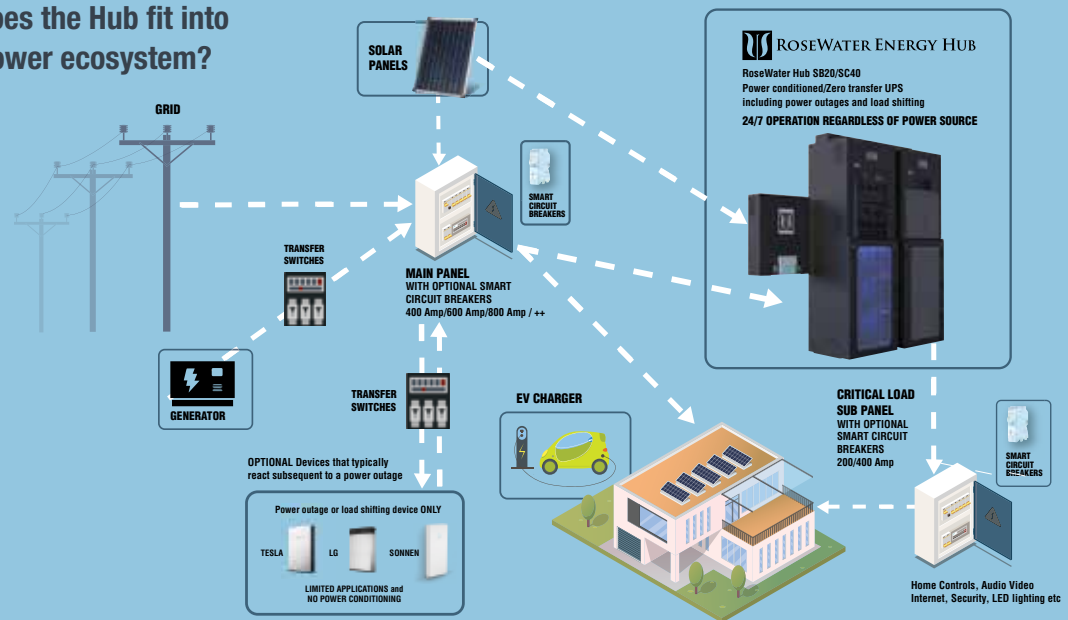
REMOTE MONITORING

Full-time remote monitoring included

SUSTAINABLE PRODUCT

The ability to integrate solar and use the internal automation to reduce carbon footprint. And, the lead-acid batteries used in the Hub are 96% recyclable.

How does the Hub fit into your power ecosystem?





NANO CARBON CONFIGURATION

Part Number	Inverters (kVA)	Catastrophic Event (Battery Charge) (NP kWh)	Cycle Life Expectancy @ 75° F
HUB SB20-28-8-NC	20	28.8	7 years

HUBSB20 SPECS	DIMENSIONS	WEIGHT
Hub SB20	84" H x 28.1" W x 26.25" D	2,400 lbs

SYSTEM OUTPUT POWER (UPS)	
AC Voltage	120/240V 3 Wire + Ground
AC Current	83A Max
Frequency	60Hz, Same as input frequency
Power	Up to 20kVA/16kW Continuous, 10kVA/8kW per line (i.e. per shelf)
Transfer Time	Zero transfer time

UPS INVERTERS	
Inverter System	AMPS80-2-20
Inverter Quantity	8
Inverter Arrangement	Two shelves, once phase per shelf (L1 and L2)
Input Voltage (VAC)	120V (range 90V - 140V adjustable)
Output Voltage (VAC)	120V
Battery Voltage (VDC)	48 nominal (range 40V - 60V adjustable)
Transfer Time	Zero Transfer Time
Safety Standards, NRTL Recognition	CSA C22.2 107.3-05, UL1778; Issue 4 (shelves and modules)
EMC	FCC CFR47 Part 15 Class A; ICES-003

BATTERIES	
Model	AlphaCell 200NC
Type	VRLA
Battery Voltage (VDC)	12V
Battery Bus Voltage (VDC)	48V
Energy Storage	57.6 kVA with an extra battery pack
Battery Expansion	(3) trays pre-wired in all models

ENCLOSURE	
Mounting	Ground Mount, Concrete, Anchored
Corrosion Resistance	Powder Coated
System Level Cooling	Passive (dedicated forced air convection at individual component level)
Environment	Indoor
Pollution Degree	IEC Pollution Degree 2
Filters	None
Storage Temperature (C)	-4 to 130° F
Operation Temperature (C)	-4 to 104° F
Power de-rating with local operating temperature	1% per degree above 25°C (FXR-A grid tie inverter only)
1% per degree above 40°C (FM80 only)	
Humidity (%)	0 to 93% non-condensing

ACCESSORIES	DIMENSIONS	WEIGHTS
Extended Battery Pack (EBP)	84" H x 28.1" W x 22.1" D	2,000 lbs
Solar Box (SB10)	30.5" H x 24" W x 9.75" D	73 lbs

