

ROSEWATER



ENERGY GROUP

THE NEXT GENERATION OF ENERGY

Power is the foundation® for all that we do. How we entertain ourselves, make ourselves comfortable, and even how we interact with each other. The products integrators install are requiring more and more microprocessors, and ultimately, their performance relies on power quality. Couple that with an aging infrastructure and it becomes clear why your clients are experiencing so many power related issues and it's a problem we can solve.

The **RoseWater Energy HUB** is an all-in-one luxury residential and light commercial energy management solution integrating industrial grade capabilities into one platform to serve the complete energy management needs, from critical loads all the way up to an entire premise.

- Power purification with an unwavering 120-volt 60 Hz output **protects and enhances** the performance of all home and office electronics, eliminating most if not all, service calls.
- Uninterruptable Power Supply with **zero transfer time**, with a large amount of battery backup will allow your clients to ride out power failures/issues safely and securely.
- **Industrial grade surge protection** to mitigate the damage caused by naturally occurring weather anomalies like lightning strikes.

Having everything preassembled, configured, prewired, and tested before installation ensures everything is ready for installation by our nation-wide installation team at the jobsite. We ensure our support towers above our competitors.

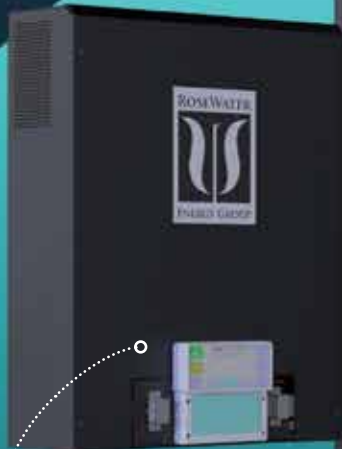


SB20

“A recent system we installed has half a million dollars in technology integration. With all that tech installed, we have only had to go out to their home because they wanted to add more fun stuff. Not a single service call in over six months — and that’s just not heard of if we are all being honest.”

– Lamar Gibson, president,
Miestro Home Integration, Nashville, TN

ACCESSORIES



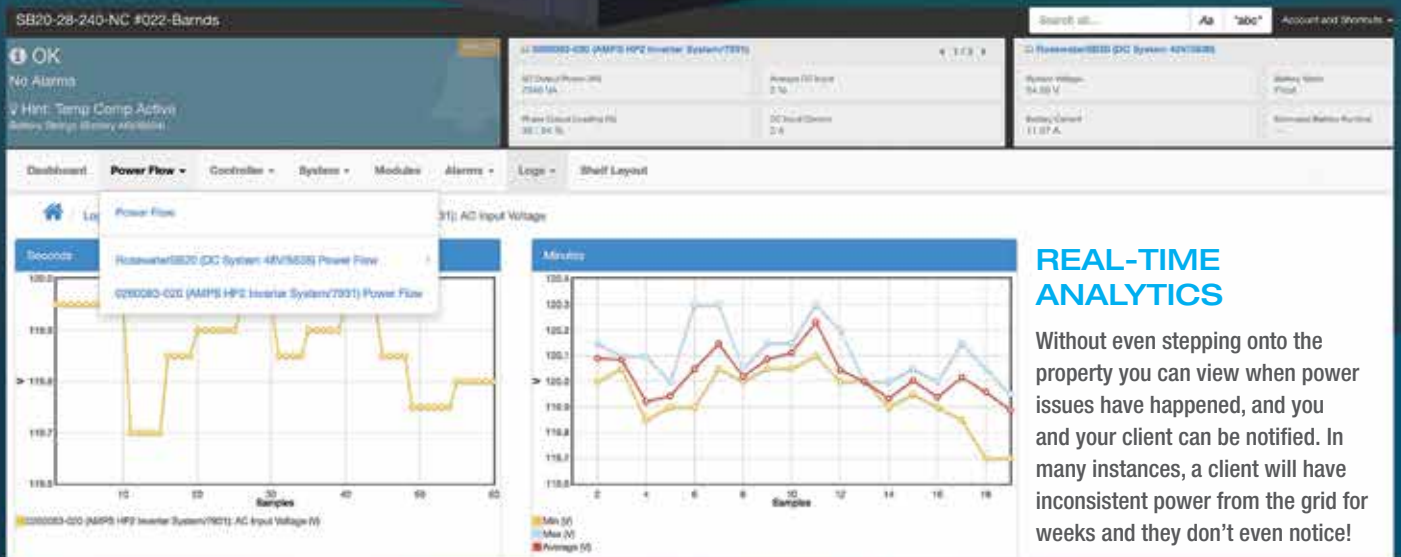
SOLAR BOX 10 (SB10)

The SB10 Solar Box can be added to allow the Hub to accept solar power inputs.



EXTENDED BATTERY PACK (EBP)

The HUB has the option for up to two Extended Battery Packages (EPB). Depending on the required battery load of the site, this can extend power for several more hours, days, or potentially indefinitely.



“With the HUB, I am getting a clean 60 cycle sine wave during an outage, while powered, and all the in-between times... My experience has been flawless.”

- Jeff Galea, Owner of Boca Theater and Automation Boca Raton, FL



HOW DOES THE HUB SB20 STACK UP TO THE COMPETITION?

The design prowess, engineering expertise and manufacturing capability sets the RoseWater SB20 apart from the competition. Let's break down the details:

LOWEST TOTAL HARMONIC DISTORTION

All the critical electronics connected through the HUB work better, are more reliable and will last longer.

COMMERCIAL, TELECOM AND MILITARY GRADE LIGHTNING PROTECTION

RoseWater utilizes the same type of lightning protection used to protect mission critical devices.

HIGHEST EFFICIENCY

Very little loss of power through the device.

LONGEST BATTERY RUN TIME

Unlike our competition, our run times are calculated in terms of hours, not minutes.

20 KILOWATTS OF OUTPUT

This is typically enough power to cover all AV, lighting, security, internet infrastructure and control in a typical home or small/medium business.

INDUSTRY LEADING THREE-YEAR WARRANTY

INCLUDED PRE-SALE ENGINEERING AND CONTRACTOR INTERFACE

FULL CONTROL AND REMOTE MONITORING

RoseWater engineers and the local integrator are always in touch with the HUB, allowing them to monitor the device.

SUSTAINABLE PRODUCT

The ability to integrate solar and use the internal automation to reduce carbon footprint. And, the lead-acid batteries used in the Hub are 99.5% recyclable.



Put simply, the RoseWater SB20 is the best built and most complete energy management device available today.



ROSEWATER ENERGY STORAGE SB20

NANO CARBON CONFIGURATION

Part Number	Inverters (kVA)	Catastrophic Event (Battery Charge) (NP kWh)	Cycle Life Expectancy @ 75° F
HUB SB20-28-8-NC	20	28.8	7 years

HUBSB20 SPECS DIMENSIONS WEIGHT

HUB SB20 84" H x 28.1" W x 26.25" D 2,400 lbs

SYSTEM OUTPUT POWER (UPS)

AC Voltage 120/240V 3 Wire + Ground
 AC Current 83A Max
 Frequency 60Hz, Same as input frequency
 Power Up to 20kVA/16kW Continuous, 10kVA/8kW per line (i.e. per shelf)
 Transfer Time Zero transfer time

UPS INVERTERS

Inverter System AMPS80-2-20
 Inverter Quantity 8
 Inverter Arrangement Two shelves, once phase per shelf (L1 and L2)
 Input Voltage (VAC) 120V (range 90V - 140V adjustable)
 Output Voltage (VAC) 120V
 Battery Voltage (VDC) 48 nominal (range 40V - 60V adjustable)
 Transfer Time Zero Transfer Time
 Safety Standards, NRTL Recognition CSA C22.2 107.3-05, UL1778; Issue 4 (shelves and modules)
 EMC FCC CFR47 Part 15 Class A; ICES-003

BATTERIES

Model AlphaCell 200NC
 Type VRLA
 Battery Voltage (VDC) 12V
 Battery Bus Voltage (VDC) 48V
 Energy Storage 57.6 with and extra battery pack
 Battery Expansion (3) trays pre-wired in all models

ENCLOSURE

Mounting Ground Mount, Concrete, Anchored
 Corrosion Resistance Powder Coated
 System Level Cooling Passive (dedicated forced air convection at individual component level)
 Environment Indoor
 Pollution Degree IEC Pollution Degree 2
 Filters None
 Storage Temperature (C) -4 to 130° F
 Operation Temperature (C) -4 to 104° F
 Power de-rating with local operating temperature 1% per degree above 25°C (FXR-A grid tie inverter only)
 1% per degree above 40°C (FM80 only)
 Humidity (%) 0 to 93% non-condensing

ACCESSORIES DIMENSIONS WEIGHTS

Extended Battery Pack (EBP)	84" H x 28.1" W x 22.1" D	2,000 lbs
Solar Box (SB10)	30.5" H x 24" W x 9.75" D	73 lbs

This is preliminary information. All specs stated are subject to change.

